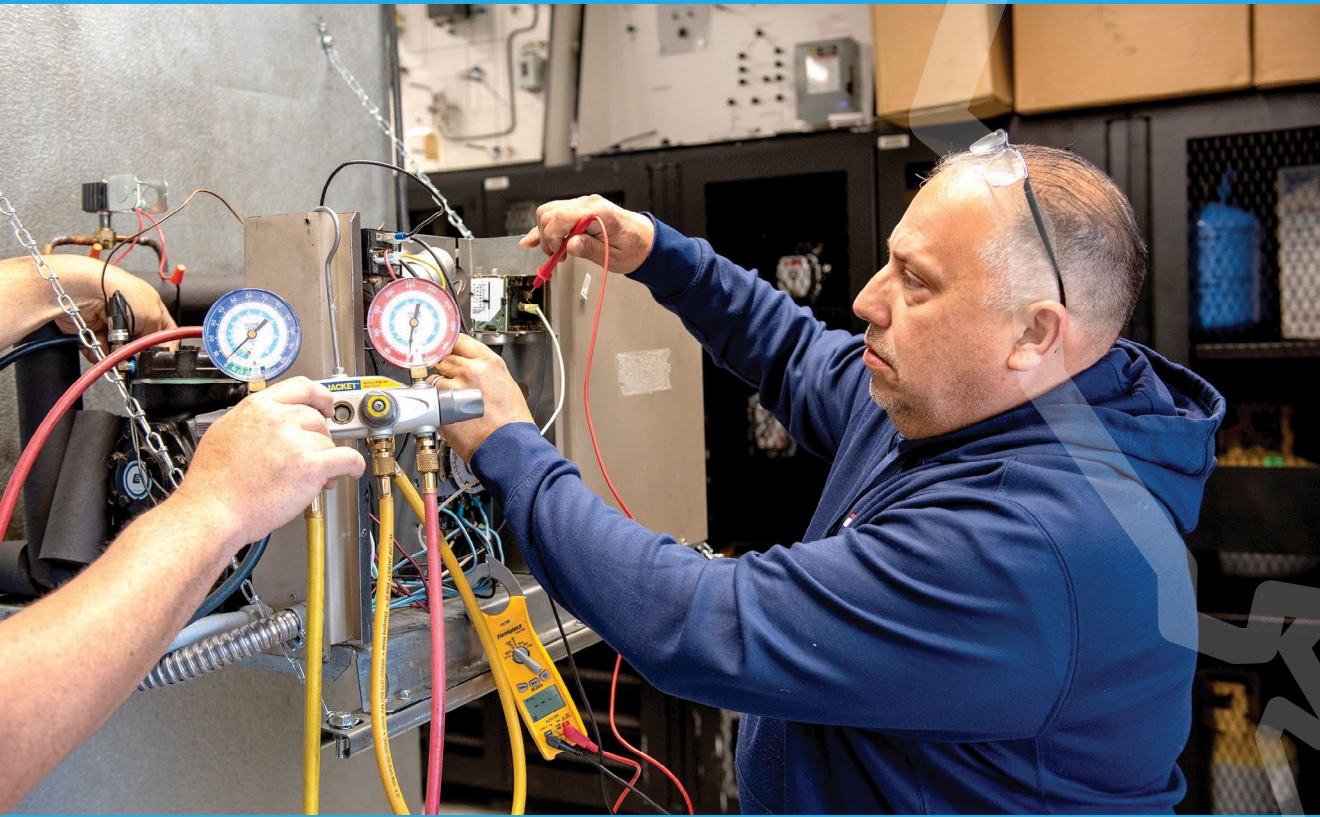


SAN JOAQUIN
**Adult
Education**
CONSORTIUM



SAN JOAQUIN
**Adult
Education**
CONSORTIUM

Learning is a Lifelong Journey





SAN JOAQUIN
**Adult
Education**
CONSORTIUM

Empowering our community through education

Coordinating Educational Providers to Meet Community Needs

Adult schools, Delta College and Community-Based Organizations coordinate to transform lives across San Joaquin County. These collaborations ultimately drive enrollments and outcomes, linking underserved populations to educational pathways and quality jobs.



Bridging Underserved Adults to Higher Education: A Shared Vision

The San Joaquin Adult Education Consortium (SJAEC) and Delta College share a common goal of empowering underserved adults to access higher education. This alignment supports seamless pathways to college credits, certificates, and degrees, while also fostering non-credit initiatives that enhance student success. By collaborating with the SJAEC, Delta College is well-positioned to expand educational opportunities for adult learners, reduce barriers to postsecondary education, and enhance workforce readiness in the community.

PROVEN PROGRAM SUCCESS

- Adult Dual Enrollment leveraging SB 554 and the Directing Adults on the Right TrAC for Employment (DARTE) Learning Community
- Career Pathways: Allied Health and Logistics, Industrial Maintenance and Manufacturing (LIMM)
- Co-Located Delta College Classes and Programs at Adult Schools: ESL in Stockton and Tracy, CNA in Lodi, Electrical in Manteca
- Comprehensive Data Tracking and Referrals
- Integrated Student Transition Support - Over 2,500 Adult School student transitions to Delta College since 2015
- GoSJ Website: Connecting the community with education and career resources
- Incubating Organizations and Programs such as HealthForce Partners Northern San Joaquin Valley
- Partner Collaboration: We work hand-in-hand and have strong partnerships with organizations such as:
 - Amelia Ann Adams Whole Life Center
 - California Human Development
 - Catholic Charities
 - Community Partnership for Families of San Joaquin
 - CSU Stanislaus
 - Edge Collaborative
 - El Concilio

- Family Resource Center
- Green Economy Lab
- HealthForce Partners of Northern San Joaquin Valley
- Housing Authority of the County of San Joaquin (HACSJ)
- Ready to Work San Joaquin
- Salvation Army
- San Joaquin County Human Services Agency
- San Joaquin County WorkNet
- San Joaquin Partnership
- Stockton-San Joaquin County Public Library
- United Way of San Joaquin County
- University of the Pacific - Center for Business and Policy Research

INNOVATION FOR THE FUTURE

Building on proven best practices, we're always evolving and developing innovative programs such as:

- Dual enrollment opportunities
- Contextualized math and English courses
- Career development and preparation courses
- Pell Grant eligibility through Ability to Benefit programs

Join us in building a brighter future for San Joaquin County through education and community engagement

PROGRAMS

	LODI ADULT SCHOOL	MANTECA ED & TRAINING CENTER	SAN JOAQUIN COUNTY OFFICE OF EDUCATION	SAN JOAQUIN DELTA COLLEGE	STOCKTON SCHOOL FOR ADULTS	TRACY ADULT SCHOOL	CALAVERAS COUNTY OFFICE OF EDUCATION	LINCOLN ADULT SCHOOL	WIND RIVER ADULT SCHOOL
High School Diploma or Equivalent	✓	✓	✓		✓	✓	✓		✓
English as a Second Language (ESL) & Citizenship Prep	✓	✓		✓	✓	✓	✓	✓	✓
SHORT-TERM TRAINING (4-10 WEEKS)									
Allied Health	✓			✓	✓				
Technology & Business	✓	✓	✓	✓	✓	✓			
Logistics, Industrial Maintenance & Manufacturing		✓		✓					✓
Paraprofessional	✓	✓	✓	✓			✓		✓
CTE PROGRAMS									
Careers with Children	✓		✓	✓					✓
Careers in Education	✓		✓	✓					✓
Culinary			✓	✓					✓
TESTING CENTERS									
GED					✓				
HiSET	✓	✓				✓			
Paraprofessional	✓	✓	✓				✓		

Other Lodi Adult School CTE Programs

Computer Repair, Cybersecurity, Dental Assisting, Emergency Medical Response, Entrepreneurship, Fire Science, Graphic Design
Short-Term Training (4-10 Weeks): Dental Radiation Safety, Spanish for the Workplace, Workforce Essentials

SAN JOAQUIN ADULT EDUCATION CONSORTIUM (SJAEC)

Building a Systematic Approach for Student Transitions and Success

To fully support this partnership, we aim to enhance our staffing structure and implement a more integrated system for tracking student transitions and success. This approach will ensure a smooth transition and provide the support for adult learners as they advance through their unique educational journeys.

2024–25 Member Allocations

Calaveras County Office of Education	\$76,484
Lincoln Adult School	\$142,490
Lodi Adult School	\$1,920,546
Manteca Education and Training Center	\$1,819,465
River Delta Joint Unified	\$106,803
San Joaquin County Office of Education	\$68,902
San Joaquin Delta Community College District	\$554,786
Stockton Unified	\$4,192,864
Tracy Joint Unified	\$1,489,794
Total Allocated to Consortium	\$10,372,134

2023–24 Performance

Number of Adults Served	7,447
English Language Learners	4,754
Long-Term Unemployed	1,976
Low Income	2,502
Low Literacy	6,036



STUDENT PROFILE



18-29

LARGEST AGE GROUP



58%

DO NOT HAVE A HIGH SCHOOL DIPLOMA



52%

ENGLISH LANGUAGE LEARNER (ESL)



52%

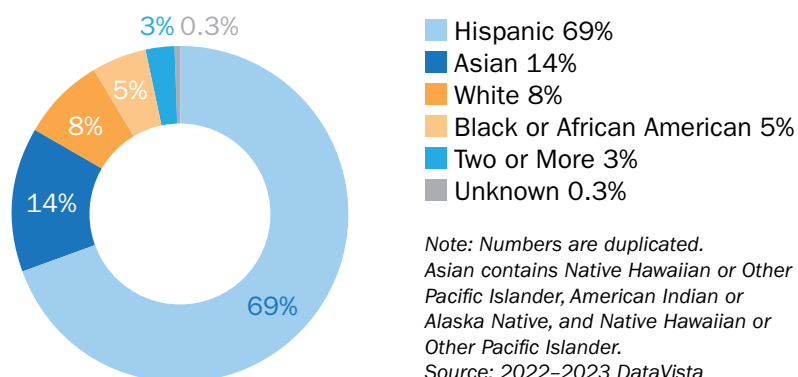
HAVE PRIOR EDUCATION OUT OF THE U.S.

Race + Ethnicity

69%

OF STUDENTS IDENTIFIED AS HISPANIC OR LATINO

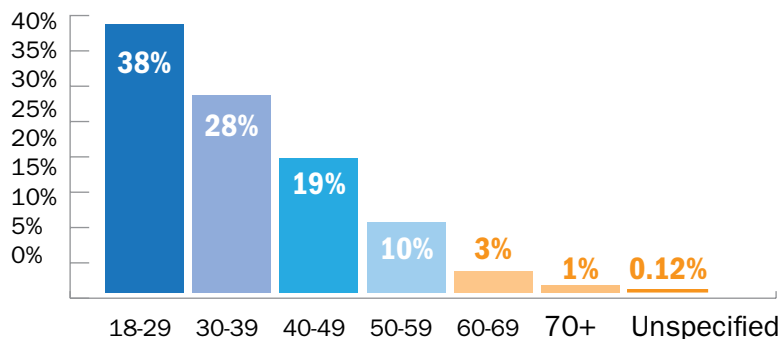
Note: Hispanic or Latino numbers are unduplicated and are independent totals.



Note: Numbers are duplicated. Asian contains Native Hawaiian or Other Pacific Islander, American Indian or Alaska Native, and Native Hawaiian or Other Pacific Islander.
Source: 2022-2023 DataVista

Gender + Age

62% FEMALE



Languages

39

LANGUAGES SPOKEN OVERALL

Spanish English

TOP 2 LANGUAGES SPOKEN

OTHER FREQUENTLY REPRESENTED LANGUAGES:

- Farsi
- Punjabi
- Vietnamese
- Arabic
- Chinese
- Urdu

Source: CASAS TOPSpro 2023-24

Program Area Participation by Hour of Instruction

669,241 TOTAL HOURS

English Language Learner (ESL/ELL) **65%**

Adult Basic Education (ABE) **7%**

Adult Secondary Education (ASE) **14%**

Career and Technical Education (CTE) **14%**

Program areas defined by California Education Code § 84913(a)(1)-(7) are English as a Second Language (ESL); Adult Basic and Secondary Education (ABE / ASE); Short-Term Career Education (CTE); programs for adults, including older adults, related to workforce entry or reentry; Pre-apprenticeship training programs coordinated with approved apprenticeship programs; programs for Adults with Disabilities (AWD), and programs for adults to develop skills to assist K-12 children in academic success (CAS).



SAN JOAQUIN
**Adult
Education**
CONSORTIUM

Want to learn more?

Click on member website links
or call listed phone numbers for
more information

[Calaveras County Office of Education](#)

(209) 736-4662

[Lincoln Adult School](#)

(209) 953-9710

[Lodi Adult School](#)

(209) 331-7605

[Manteca Education & Training Center](#)

(209) 858-7330

[San Joaquin County Office of Education](#)

(209) 468-4800

[San Joaquin Delta College](#)

(209) 954-5012

[Stockton School for Adults](#)

(209) 933-7455

[Tracy Adult School](#)

(209) 830-3384

[Wind River Adult School](#)

(707) 374-1719

SJAdulted.org
info@SJAdulted.org

